

COMMERCIAL

HOSPITALITY

RESIDENTIAL

PUBLIC

**WHO WE ARE.**



**JOAKIM DE RHAM**  
CEO | Founder

**Swiss Bureau** is a multi-award winning interior design and interior fit out company based in Dubai, United Arab Emirates. We provide a wide range of services for our clients in the commercial office, residential, hospitality and public sectors.

The backbone to our recent successes is the long term relationships we hold with our partners aligned with our team of motivated, experienced professionals willing to challenge the norm in creating award winning solutions.

Joakim De Rham, a Swiss interior architect and his local partner, Maher Al Zarooni founded the company in 2003. Since then, SBID have grown from a medium sized studio to be a market leading consultancy and fit-out contractor. Our clients range from renowned blue-chip multinationals, global entities, governments and boutique business' both here in the UAE and internationally.

As a part of the De Rham family-founded Edifice group, rooted in Lausanne, Switzerland, we combine more than 60 years of experience, respecting the rules of creativity, construction and project management.



**SB  
ID.** ■  
SWISS  
BUREAU  
INTERIOR  
DESIGN & BUILD

## DESIGN. ■

Swiss Bureau works in a variety of sectors including Corporate Office, Residential, F&B and Hospitality. Our attention to detail and construction background enables us to develop first class design packages, which not only look great but function too.

Each design is unique and developed to reflect our Client's/Operator's vision and needs. We concentrate on creating experiential and functional spaces, with the intended user's lifestyle and preferences in mind. Our designs reflect an understanding of commercial and budgetary restraints, sustainability goals and highlight the importance of coordination.

## BUILD. ■

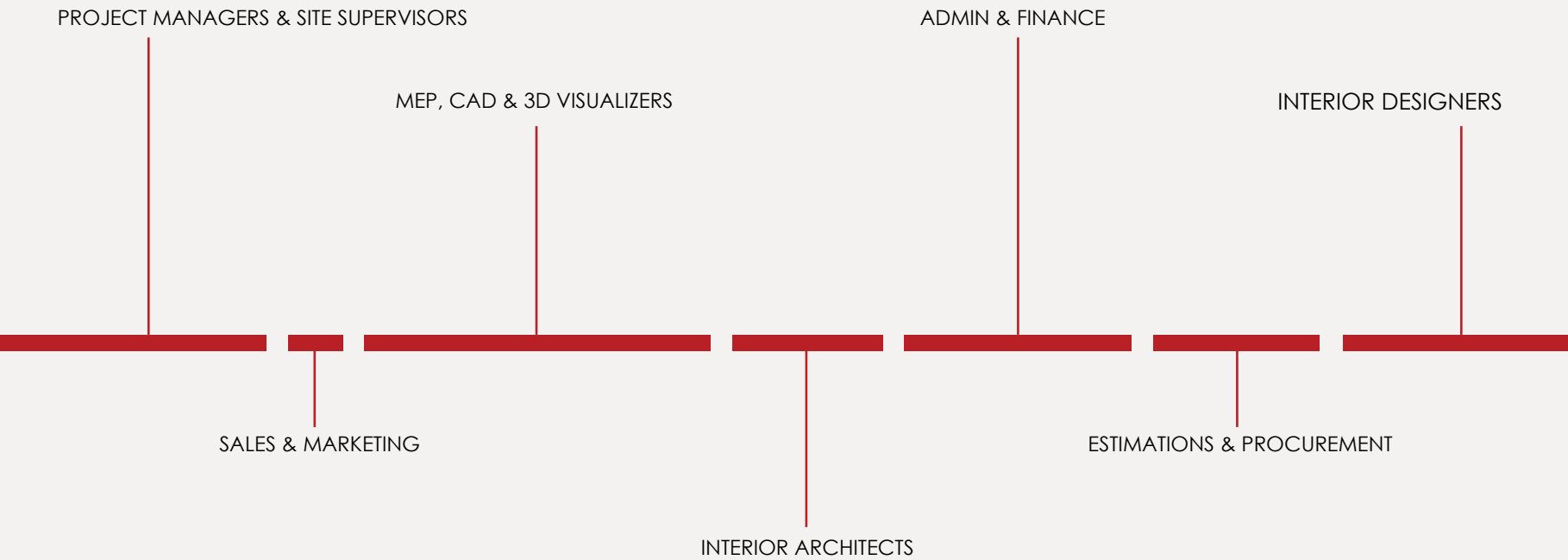
We are a complete interior general contractor and have a talented execution team in house to ensure our projects are executed to the highest standards. We take care of everything involved in the construction process including; electro mechanical, plumbing, AC, partitioning, ceiling, flooring, lighting, joinery, glass, finishes and furniture.

Our projects team will manage all aspects of the project from gaining authority approvals, procurement, cost management, coordinating with contractors on site, dealing with site issues and ultimately, handover.



**Our Team** of 50 plus employees, is made up of talented individuals from all over the world. From our highly creative design team through to our onsite project managers and engineers, each member of the team has their part to play. We are always there to back each other up, to step into the breach and provide support. We recognise the need to collaborate with each other and our clients, to play on the same team, to move in the same direction and to speak the same language.

We ‘design hard’ to be recognised as one of the most creative, innovative and trend setting design studios in the Middle East. Our goal is to provide the team an engaging, fun and challenging career and deliver projects we and our clients, can be proud of. Discipline, cooperation and commitment ensure everyone’s safety on site and the highest quality outcome.







**JOAKIM DE RHAM**  
CEO | Founder



**TOM ALDRIDGE**  
General Manager



**PETER COBLEY**  
Project Director



**ZOE ALLEN**  
Commercial Design Manager



**VAIDA BUCHROTAITE**  
Hospitality Design Manager



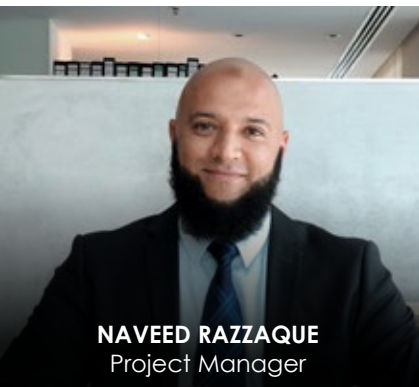
**LAURA PIANTA**  
Business Dev. Manager



**ILJA JANICIJEVIC**  
Senior Project Manager



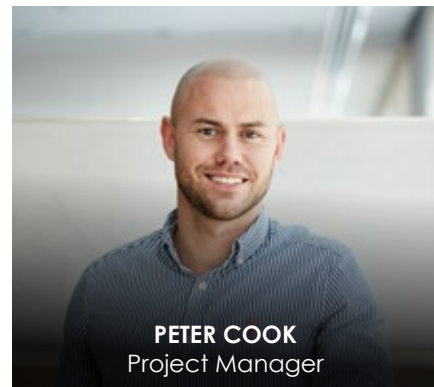
**LAURA BATHIA**  
Head of Operations



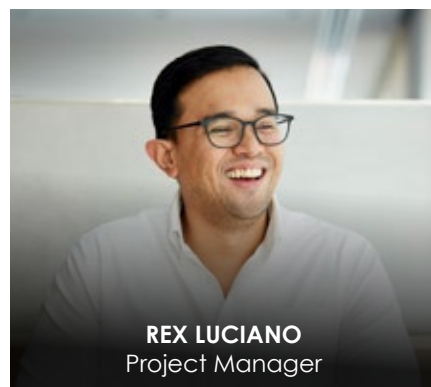
**NAVEED RAZZAQUE**  
Project Manager



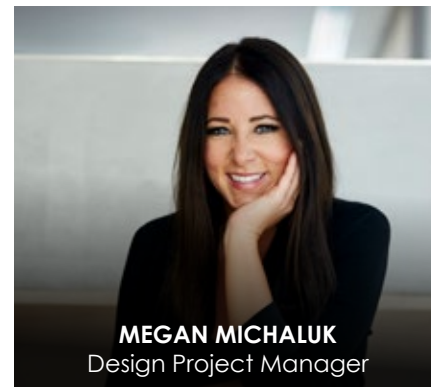
**JOEL PIKARI**  
Project Manager



**PETER COOK**  
Project Manager



**REX LUCIANO**  
Project Manager



**MEGAN MICHALUK**  
Design Project Manager



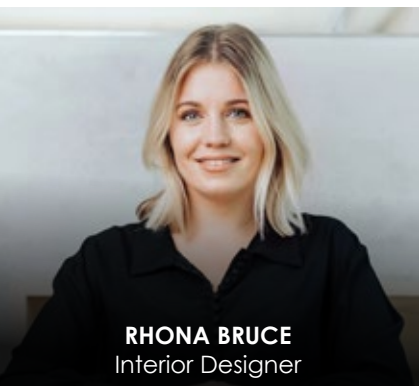
**SAI KRISHNAN**  
Estimations Manager



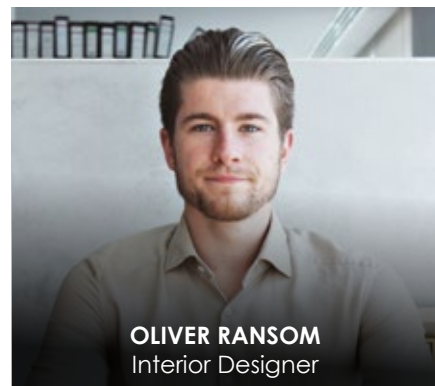
**GRISHMA SHETTY**  
Interior Designer



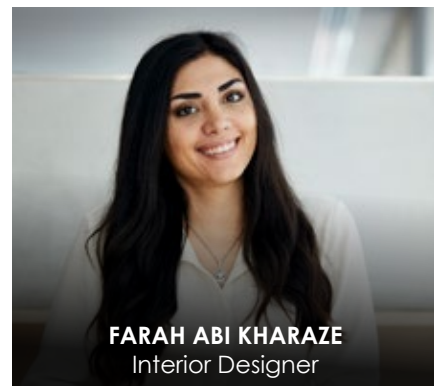
**MARIJA PURESIC**  
Senior Interior Designer



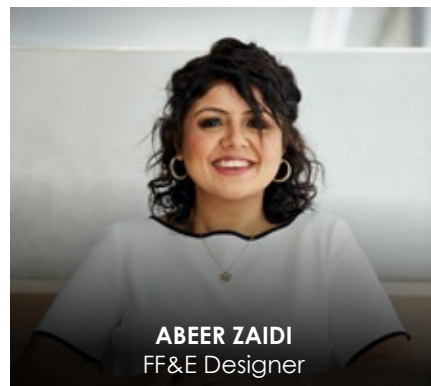
**RHONA BRUCE**  
Interior Designer



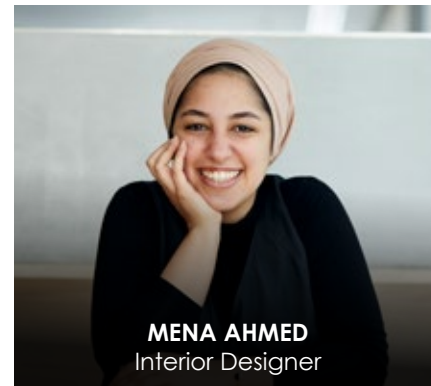
**OLIVER RANSOM**  
Interior Designer



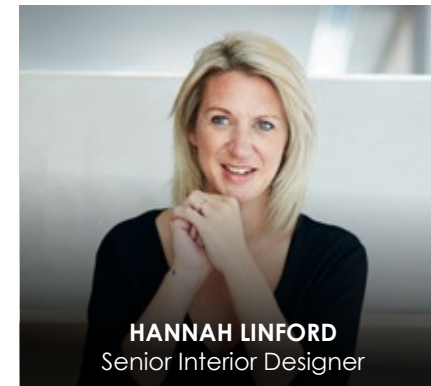
**FARAH ABI KHARAZE**  
Interior Designer



**ABEER ZAIDI**  
FF&E Designer



**MENA AHMED**  
Interior Designer



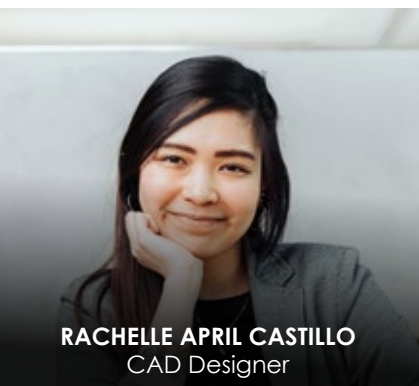
**HANNAH LINFORD**  
Senior Interior Designer



**KAMSIN MIRCHANDANI**  
Senior Interior Designer



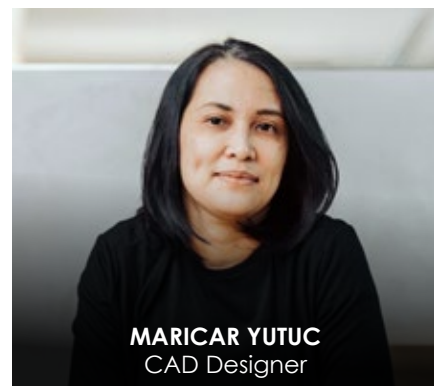
**JESSICA YU**  
Marketing Manager



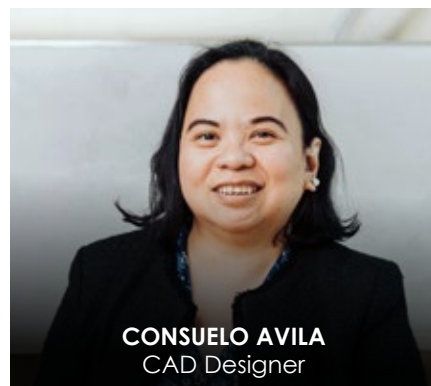
**RACHELLE APRIL CASTILLO**  
CAD Designer



**MANSOOR PALATHINGAL**  
CAD Designer



**MARICAR YUTUC**  
CAD Designer



**CONSUELO AVILA**  
CAD Designer



**LORENCE PONZONES**  
CAD Designer



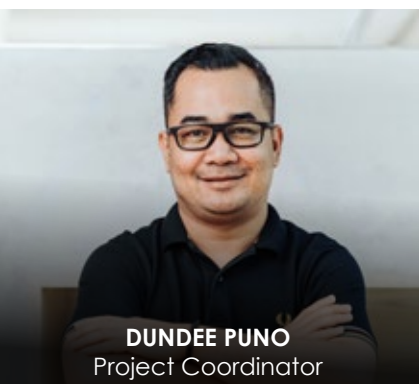
**RAMSHID MAJEED**  
Visualizer



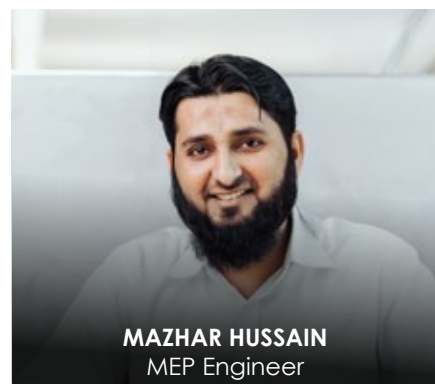
**SHERWIN BOSTON**  
Visualizer



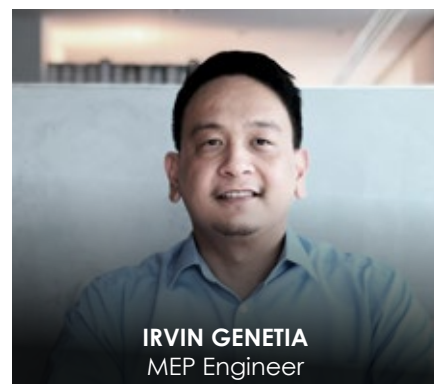
**OMER BIN ABDUL AZIZ**  
Visualizer



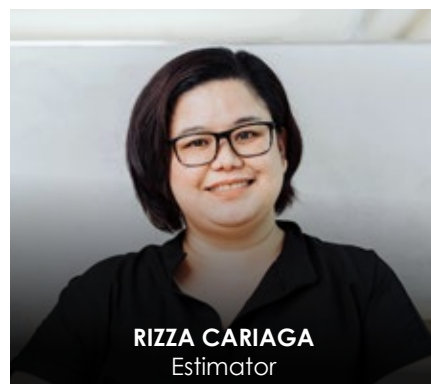
**DUNDEE PUNO**  
Project Coordinator



**MAZHAR HUSSAIN**  
MEP Engineer



**IRVIN GENETIA**  
MEP Engineer



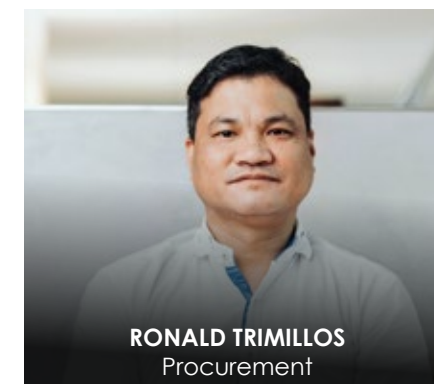
**RIZZA CARIAGA**  
Estimator



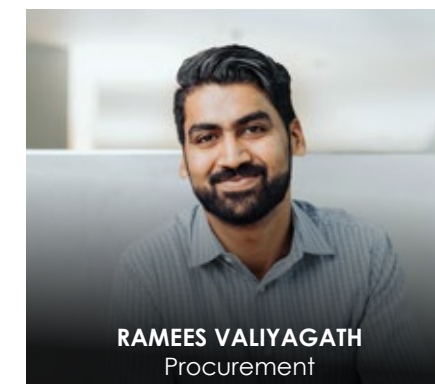
**DEEPTI LAL CHANDRA**  
Estimator



**ANJU ANEESH**  
Estimator



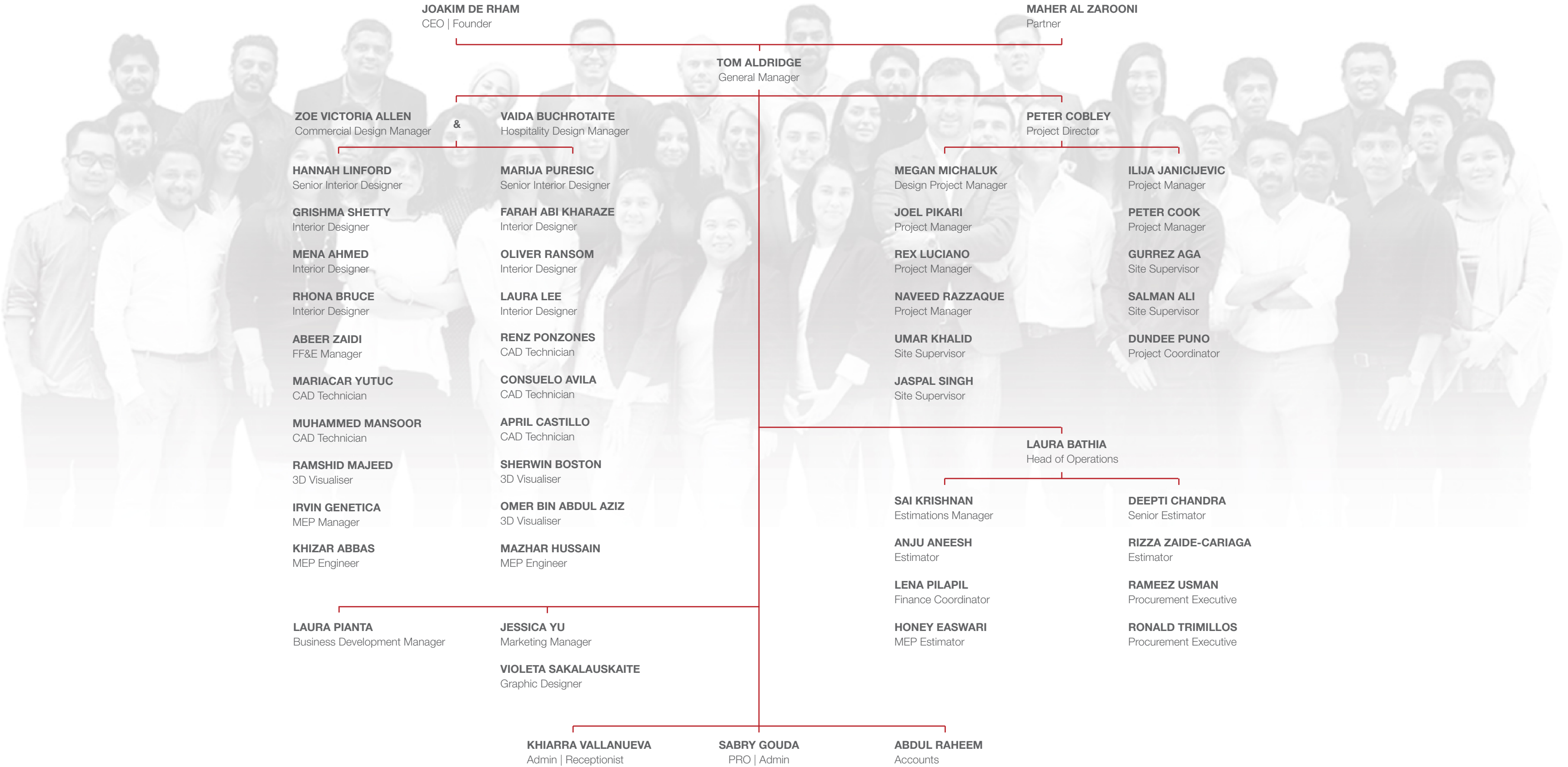
**RONALD TRIMILLOS**  
Procurement



**RAMEES VALIYAGATH**  
Procurement



■ TEAM CHART





“WE ARE A POWER HOUSE OF CREATIVES”  
Joakim De Rham



Nominated: Best Interior Design Firm Of The Year - SBID 2018  
Nominated: Best Design Leader - Joakim De Rham 2018  
Nominated: Best Office Design Of The Year - Unbox 2018  
Nominated: Best Public Space Design - Tecom Auditorium 2018  
Finalist: Best Commercial Design Project - Dinor 2017



Awarded: Best Government Sector Facility - United Nations 2018



Nominated: Public Space Design - United Nations 2017



Awarded: Office Interior Design Of The Year - ENI 2018  
Nominated: Office Interior Design Of The Year Hira Walraven 2018  
Nominated: Best Boutique Office Of The Year - Mojeh 2017  
Nominated: Best Corporate Office Interior - Unbox 2017  
Nominated: Best Public Building Design - Tecom Auditorium 2017



Nominated: Public Sector Design Of The Year - United Nations 2017



Awarded: 5★ Award Level: Office Interior Category Dubai - Revonic 2019  
Nomination: Office Interior Design Of The Year - Revonic 2019  
Awarded: Winner Level Public Service Interior Category Dubai - DIAC 2019  
Awarded: Office Interior Design Of The Year - Unbox 2018  
Awarded: Public Sector Design Of The Year - Tecom Auditorium 2018  
Awarded: Best International Public Service Interior - United Nations 2017  
Awarded: 5★ Award - United Nations 2017  
Awarded: Best Public Service Interior Of Europe - United Nations 2017



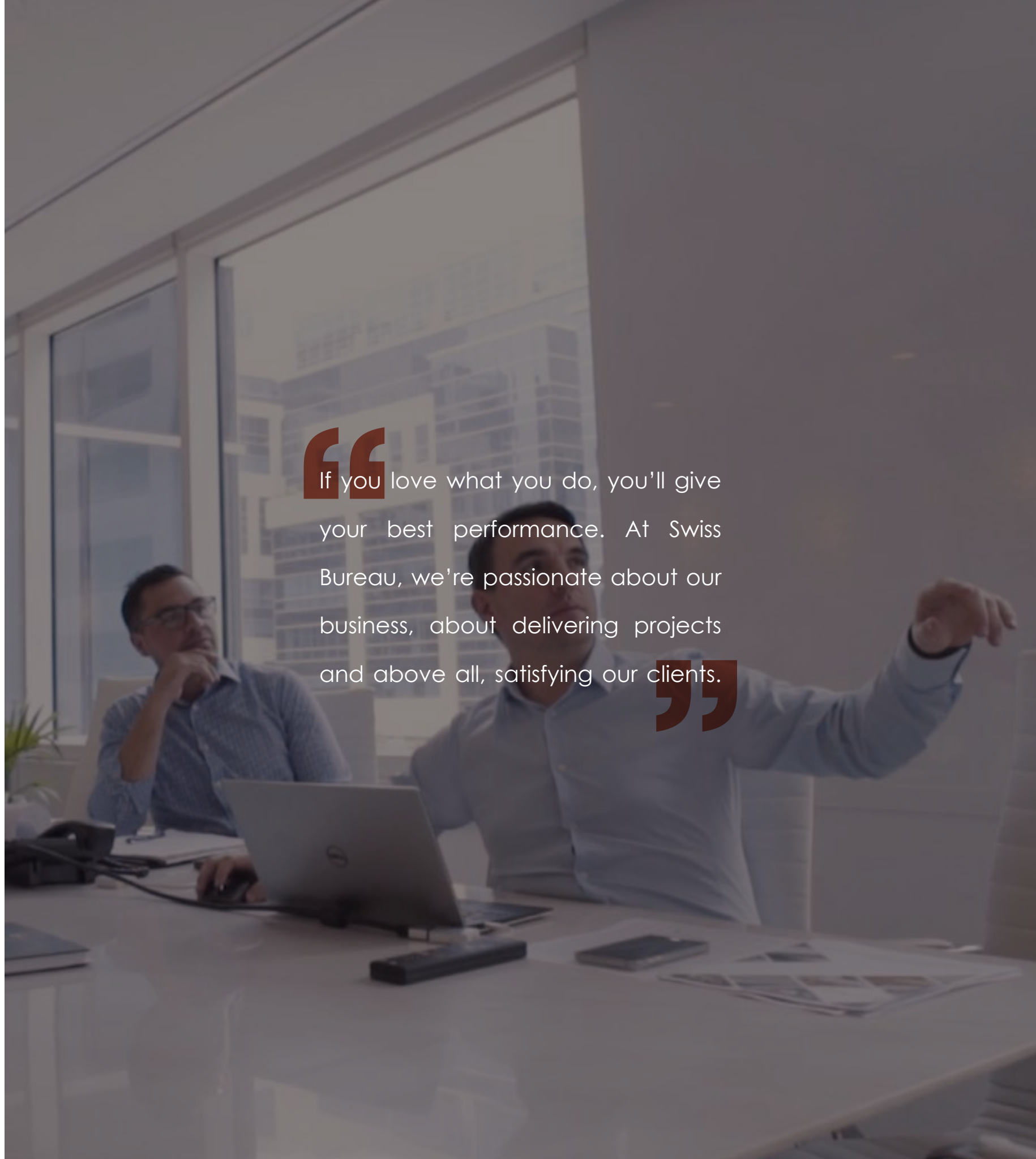
Nominated: Interior Design Of The Year: Office - Revonic 2019  
Nominated: Interior Design Of The Year: Public Sector - DCCA 2019  
Awarded: Highly Commended For Best ID Firm Of The Year - SBID 2018  
Nominated: Interior Design Of The Year: Office - Hira Walraven 2018  
Nominated: Best Interior Design Firm Of The Year - SBID 2017  
Nominated: Best Interior Design Of The Year - Mojeh 2017



■ OUR CLIENTS



“ If you love what you do, you'll give your best performance. At Swiss Bureau, we're passionate about our business, about delivering projects and above all, satisfying our clients. ”



**PUBLIC.**



INAVATION AWARDS  
TECHNOLOGY FINALIST 2017

&

INTERNATIONAL  
PROPERTY  
AWARDS



LA SALLE DES EMIRATS



UNITED NATIONS

UNITED NATIONS GENEVA

Client  
Size  
Scope  
Location

United Nations  
Undisclosed  
Design Consultancy  
Geneva, Switzerland









TECOM GROUP

## ■ DUBAI KNOWLEDGE VILLAGE

■ Client	Tecom Group
■ Size	58,340 Sqft
■ Scope	Design & Build
■ Location	Dubai Knowledge Village, Dubai, UAE









TECOM GROUP

■ DIAC CONFERENCE CENTER

- Client Tecom Group
- Size 17,000 Sqft
- Scope Design Consultancy
- Location Dubai Academic City, Dubai, UAE











سلطة دبي للمجمعات الإبداعية  
DUBAI CREATIVE CLUSTERS AUTHORITY

■ DCCA

■ **Client** Dubai Creative Clusters Authority  
■ **Size** 5,000 Sqft  
■ **Scope** Design  
■ **Location** Studio City, Dubai, UAE









ons that  
first

r of Expo 2020 Dubai.



et's talk... Simple Solution



## EMIRATES NATIONAL BANK OF DUBAI

Client	Emirates NBD
Size	Approx 2,600 Sqft
Scope	Design Consultancy
Location	Multiple









■ **SWISS SCIENTIFIC SCHOOL**

■ <b>Client</b>	Swiss Scientific School Board
■ <b>Size</b>	Undisclosed
■ <b>Scope</b>	Design Consultancy
■ <b>Location</b>	Dubai, UAE









IKIA

## TEHRAN AIRPORT

**Client** Tehran Government  
**Size** Undisclosed  
**Scope** Design Consultancy  
**Location** Tehran, Iran









■ **TECOM AUDITORIUM**

- **Client** Tecom Group
- **Size** 16,000 Sqft
- **Scope** Design & Build
- **Location** Dubai, UAE









## ■ DUBAI ECONOMIC DEPARTMENT

■ Client	Ministry of Economic Development
■ Size	18,000 Sqft
■ Scope	Design & Build
■ Location	Dubai, UAE









PEOPLE WHO  
LOVE TO EAT  
ARE ALWAYS THE  
BEST PEOPLE.

مركز الشباب

YOUTH HUB

■ YOUTH HUB

■ **Client** Youth Hub Council  
■ **Size** 13,500 Sqft  
■ **Scope** Design Consultancy  
■ **Location** Ras Al Khaimah, UAE









NEW  
PERSPECTIVES  
THROUGH  
PHOTOGRAPHY

EAST WING

METROPOLIS  
MARTIN ROE

EAST WING

**EAST WING GALLERY**

Client	East Wing
Size	2,158 Sqft
Scope	Design & Build
Location	Dubai, UAE









■ **UNDISCLOSED EMBASSY**

■ **Client** Private Client  
■ **Size** 8,000 Sqft  
■ **Scope** Design Consultncy  
■ **Location** Undisclosed









# THANK YOU.

**T:** +971 4 277 04 02

**W:** [www.sb-id.com](http://www.sb-id.com)



Bay Square | Building 6 | Office 105 | Business Bay | Dubai | UAE | P.O.B: 111581

**SWISS BUREAU** INTERIOR DESIGN & BUILD